

## SAFETY PRECAUTIONS

1. The device must be installed by a qualified person,
2. Disconnect all power before working on the device. Don't touch any terminal when the power is ON.
3. Verify correct terminal connection when wiring.
4. Don't dismantle or repair the device whether it operates normally, otherwise no responsibility is assumed by producer and seller.
5. Never use the device at the site which can be invaded by corrode gas, strong sunshine light and rain.
6. Clean the device with a dry cloth.
7. Fail to follow these instructions will result in serious injury or death.

## FEATURES

- WIFI control.
- Double 3 digit display for voltage, current, leakage current and kWh power etc.
- Protect electrical device against over/under voltage, over current and earth leakage faults
- Parameters setting by keys.
- 1-63A adjustable.
- 2 Module, DIN Rail mounting.

## TECHNICAL DATA

Rated supply voltage	AC 220V
Operation voltage range	AC 50V~350V
Rated frequency	50/60Hz
Overvoltage(U>) setting range	220~300V
Undervoltage(U<) setting range	120~210V
Overcurrent(I>) setting range	1~63A
Maximum operating current I <sub>max</sub>	80A
Leakage current setting range	10mA~99mA
Power-on delay	Ton: 1s~300s
Recovery delay	Tr: 1s~500s
Overcurrent faults trip delay range	Ta: 1s~600s
Overvoltage(U>) trip delay	0.5s
Undervoltage(U<) trip delay	0.5s
Leakage current trip delay	<0.1s
Rated insulation voltage	350V
Output contact	1NO
Electrical life	10 <sup>4</sup>
Mechanical life	10 <sup>6</sup>
Protection degree	IP20
Pollution degree	3
Altitude	≤2000m
Operating temperature	-5℃~40℃
Humidity	≤50% at 40℃(without condensation)
Storage temperature	-25℃~55℃

\* Operating current value

## Default setting

Technical parameter	Setting range	Step	Factory setting
Overvoltage trip value	220V-300V	1V	250V
Undervoltage trip value	80V-210V	1V	170V
Overcurrent(I>) setting range	1-63A	1A	63A
Leakage current setting range	10mA-99mA	1mA	30mA
Power-on delay	1s-300s	1s	15s
Recovery delay	1s-600s	1s	90s
Overcurrent trip delay	1s-500s	1s	15s

# TR-PVAMWF SMART VOLTAGE PROTECTOR

Please read complete instructions prior to installation and operation of the device.

## FRONT-FACE PANEL

Symbol	Function
	Energy meter activate
	WIFI connection
	<U>U fault
	>I fault
	Leakage fault

Buttons	Function
	ON/OFF manually
	Menu setting
	Digit +/query
	Digit -/WIFI connection

- ⊗ Output relay opens
- ⊙ Output relay closes

## ● Display of power on delay

- Operating voltage and delay time on display during the counting of start delay; they will be normally ON after the delay is over and the output relay closes.

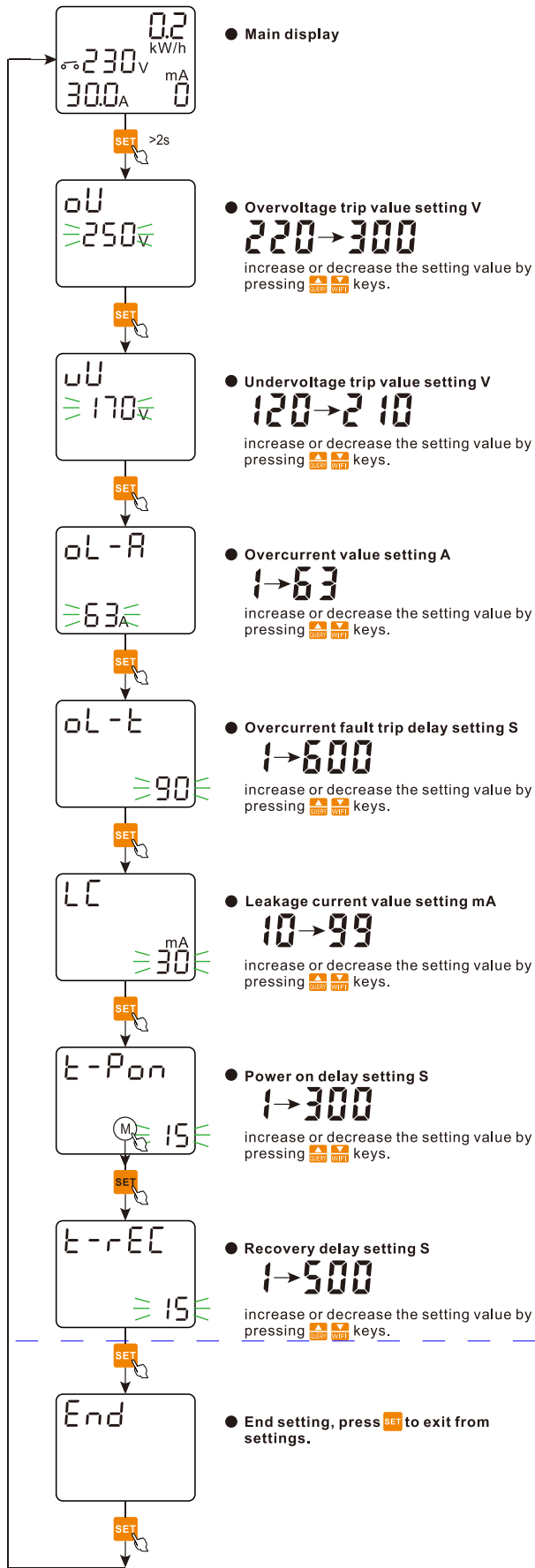
## ● Switch on and off manually

- Main display
- Switch on/off manually  
Press for 0.5s when operating normally, OFF appears, and the output relay opens  
Press for 0.5s again to enter ON(auto-running) mode

## ● WIFI connection

- Long press for 3s to pair to the WIFI.  
Indicator flashes, the device is pairing

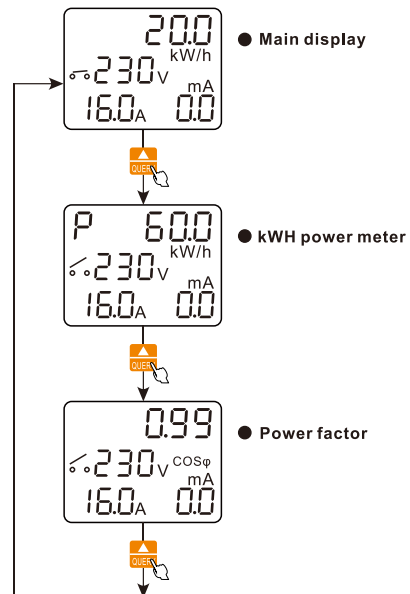
## ● Main menu



● Long press **▲** **▼** can increase or decrease rapidly.

● The relay will automatically exit from the menu and not save the modified value if not pressing the keys for continuous 60s during setting.

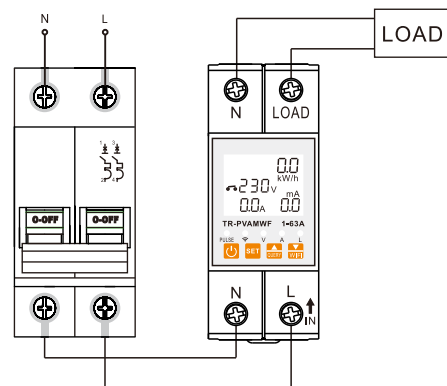
## ● Inquiry of kWh power and power factor



## OPERATING INSTRUCTIONS

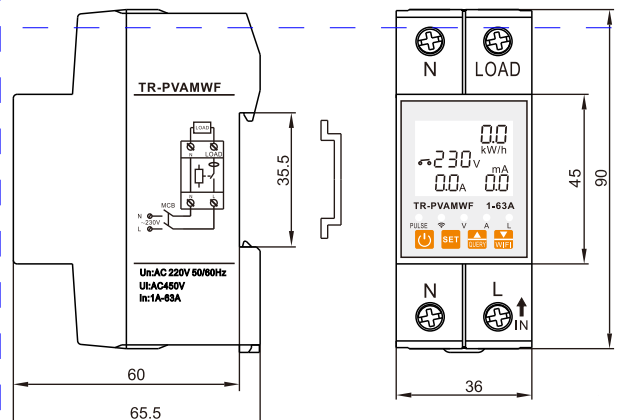
- If a voltage fault was detected when power-on delay is counting, the output relay opens and faults indication symbol lights up.
- The output relay closes if there are no faults. If a fault was detected, the output relay opens and fault indicator lights up. Faults state and operating data will be transmitted to "Tuya" APP.
- The parameters can be set by both buttons and "Tuya" APP.

## WIRING DIAGRAM



- Rated operating current of circuit breaker is 75% maximum current of the relay  $I_e = 0.75 \times I_{max}$

## DIMENSIONS



## ● WIFI connection

### 1. Download App

- Scan the QR code and download App  
Use your phone to scan the QR code below to download App.
- Search "Smart Life" by Google Play with Android phone or App Store with Iphone .

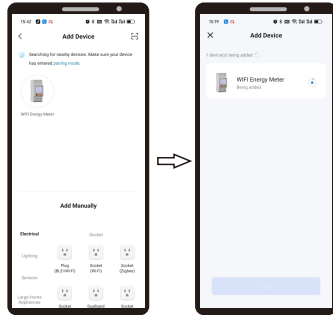


### 2. Register/Login Account


Open the App and register an account.

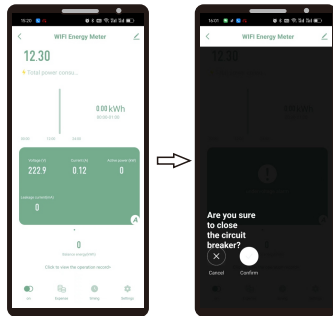
### 3. Adding a new device

Press and hold  for 3s until  light blinks fast. (Open the WIFI and bluetooth of mobile phone)



### 4. Switch

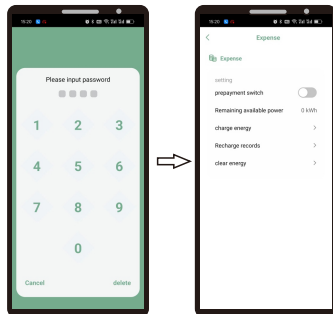
Click  to turn on or turn off the device.



### 5. kWh power meter(expense)

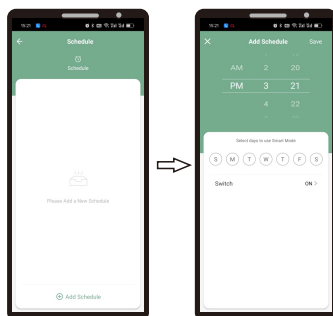
Press "prepayment switch" to activate the function.

Initial password:0000



### 6. Time schedule

Select "Schedule" to set the running time



### 6. Password and parameters setting

Set the parameters as required.

